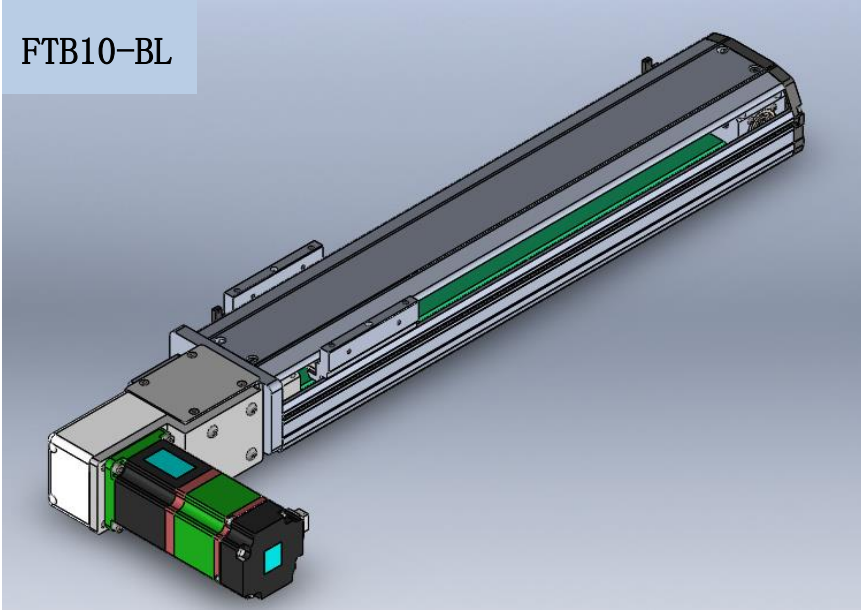
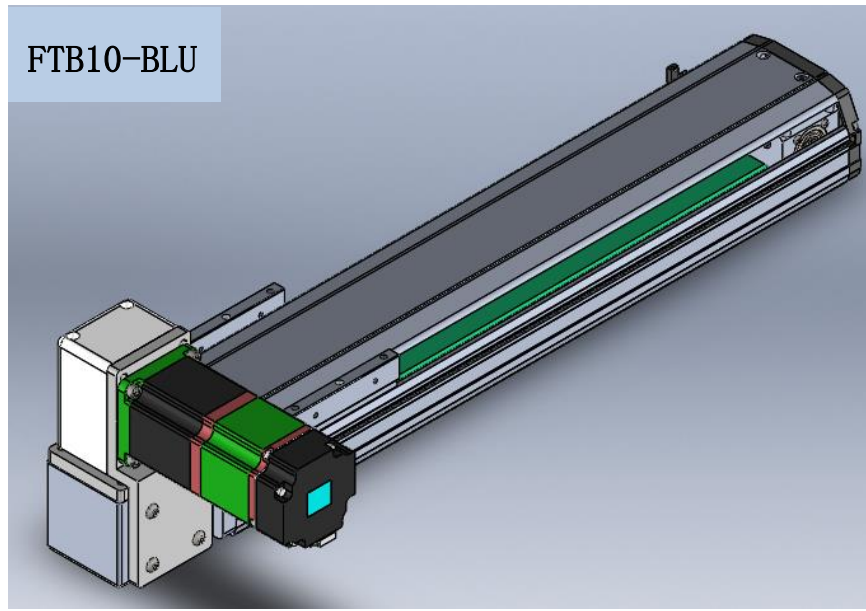


FTB10 电机连接方式

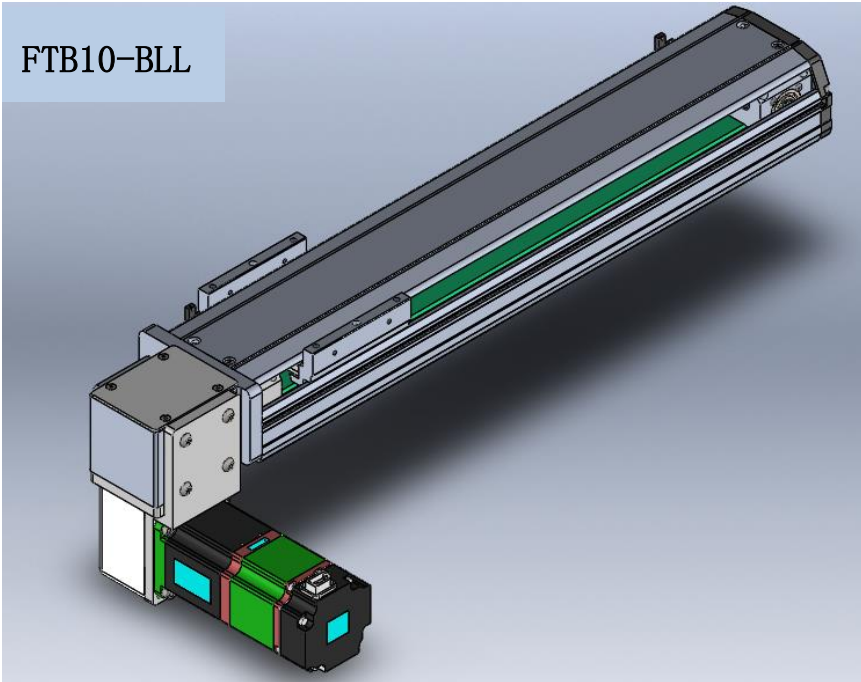
FTB10-BL



FTB10-BLU



FTB10-BLL

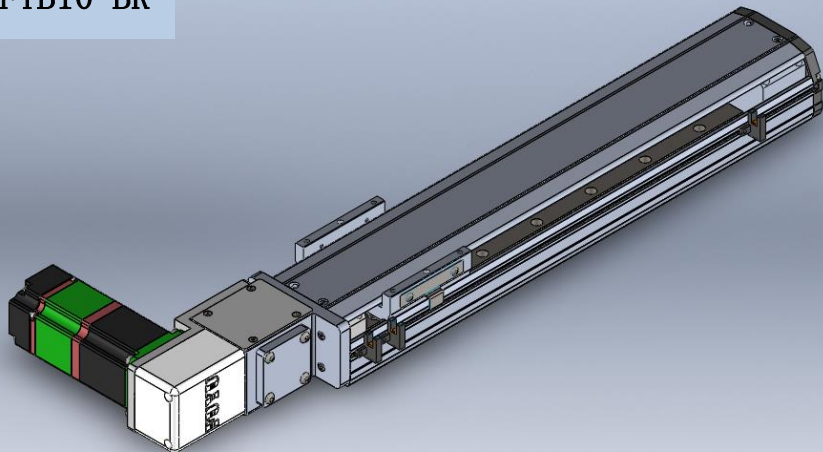


BL: 电机左折 Motor Left Side

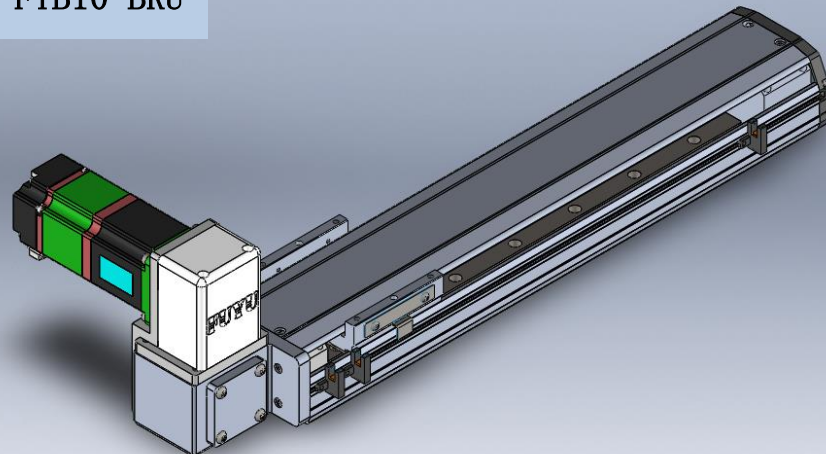
BLU: 电机左上折 Motor Left Upper Side

BLL: 电机左下折 Motor Left Lower Side

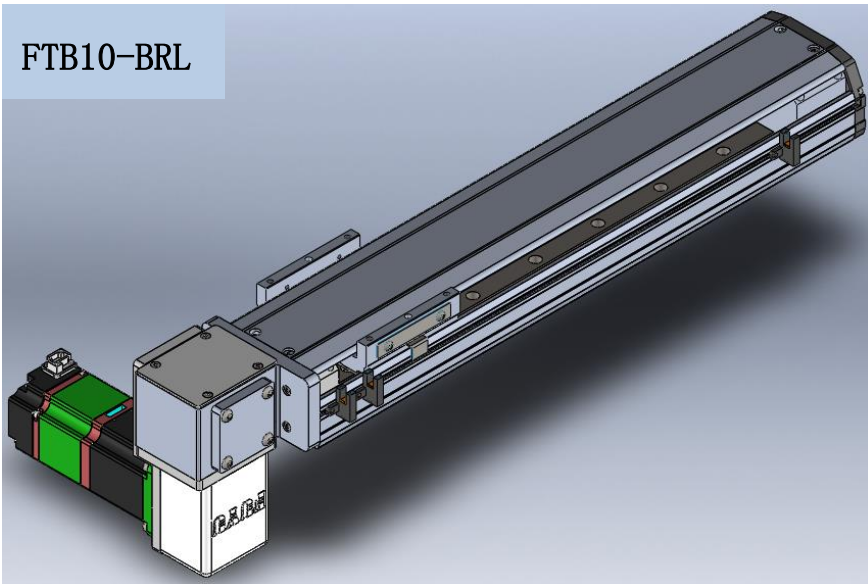
FTB10-BR



FTB10-BRU



FTB10-BRL



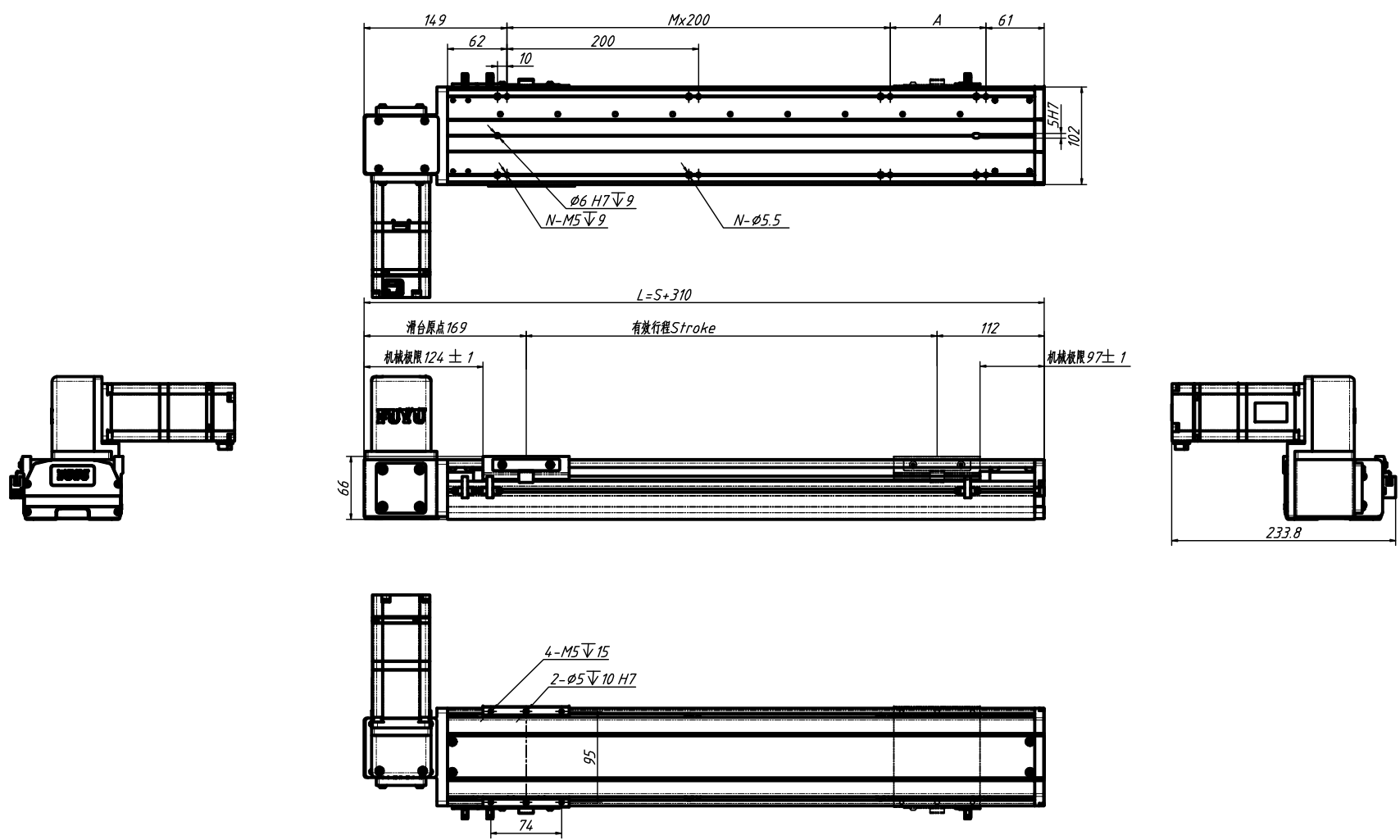
BR: 电机右折 Motor Right Side

BRU: 电机右上折 Motor Right Upper Side

BRL: 电机右下折 Motor Right Lower Side

	1			2							3							4							5							6						
有效行程 Stroke	100	200	300	400	500	600	700	800	900	1000	1100	1200	1300	1400	1500	1600	1700	1800	1900	2000	2100	2200	2300	2400	2500	2600	2700	2800	2900	3000	3100	3200	3300	3400	3500	3600	3700	
L	410	510	610	710	810	910	1010	1110	1210	1310	1410	1510	1610	1710	1810	1910	2010	2110	2210	2310	2410	2510	2610	2710	2810	2910	3010	3110	3210	3310	3410	3510	3610	3710	3810	3910	4010	
A	0	100	0	100	0	100	0	100	0	100	0	100	0	100	0	100	0	100	0	100	0	100	0	100	0	100	0	100	0	100	0	100	0	100	0	100	0	
M	1	1	2	2	3	3	4	4	5	5	6	6	7	7	8	8	9	9	10	10	11	11	12	12	13	13	14	14	15	15	16	16	17	17	18	18	19	
N	6	6	8	8	10	10	12	12	14	14	16	16	18	18	20	20	22	22	24	24	26	26	28	28	30	30	32	32	34	34	36	36	38	38	40	40	42	
重量KG	5.6	6.2	6.9	7.5	8.2	8.8	9.5	10.1	10.8	11.4	12.1	12.7	13.4	14.0	14.7	15.3	16.0	16.6	17.3	17.9	18.6	19.2	19.9	20.5	21.2	21.8	22.5	23.1	23.8	24.4	25.1	25.7	26.4	27.0	27.7	28.3	29.0	

BRU 馬達右上折 Motor Right Upper Side



	1						2						3						4						5						6						
有效行程 Stroke	100	200	300	400	500	600	700	800	900	1000	1100	1200	1300	1400	1500	1600	1700	1800	1900	2000	2100	2200	2300	2400	2500	2600	2700	2800	2900	3000	3100	3200	3300	3400	3500	3600	3700
L	410	510	610	710	810	910	1010	1110	1210	1310	1410	1510	1610	1710	1810	1910	2010	2110	2210	2310	2410	2510	2610	2710	2810	2910	3010	3110	3210	3310	3410	3510	3610	3710	3810	3910	4010
A	0	100	0	100	0	100	0	100	0	100	0	100	0	100	0	100	0	100	0	100	0	100	0	100	0	100	0	100	0	100	0	100	0	100	0	100	0
M	1	1	2	2	3	3	4	4	5	5	6	6	7	7	8	8	9	9	10	10	11	11	12	12	13	13	14	14	15	15	16	16	17	17	18	18	19
N	6	6	8	8	10	10	12	12	14	14	16	16	18	18	20	20	22	22	24	24	26	26	28	28	30	30	32	32	34	34	36	36	38	38	40	40	42
重量KG	5.6	6.2	6.9	7.5	8.2	8.8	9.5	10.1	10.8	11.4	12.1	12.7	13.4	14.0	14.7	15.3	16.0	16.6	17.3	17.9	18.6	19.2	19.9	20.5	21.2	21.8	22.5	23.1	23.8	24.4	25.1	25.7	26.4	27.0	27.7	28.3	29.0

BRL 馬達右下折 Motor Right Lower Side

